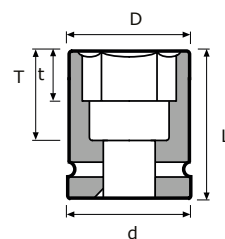


HEICO-TEC® HDS 机用套筒

产品概览



机用套筒 - 标准

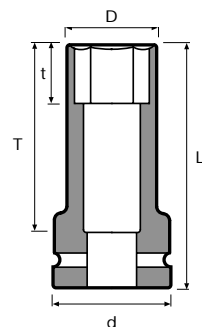
型号	编码	传动孔	对边宽度	尺寸				
				套筒端直径 D mm	传动端直径 d mm	总长度 L mm	套筒深度 t mm	总深度 T mm
HEICO-TEC HDS-1/4"-SW6	395300060000999	1/4"	6	10,1	13	25	4	15
HEICO-TEC HDS-3/8"-SW8	395300080000999	3/8"	8	13,5	19	33,5	6	21
HEICO-TEC HDS-1/2"-SW10	395300100000999	1/2"	10	17	25	38	7	22
HEICO-TEC HDS-1/2"-SW12	395300120000999	1/2"	12	19,7	25	38	8	22
HEICO-TEC HDS-1/2"-SW14	395300140000999	1/2"	14	22,5	25	38	10	22
HEICO-TEC HDS-1/2"-SW16	395300160000999	1/2"	16	24,5	30	38	10	20
HEICO-TEC HDS-3/4"-SW18	395300180000999	3/4"	18	31	44	50	11	24
HEICO-TEC HDS-3/4"-SW20	395300200000999	3/4"	20	33	44	50	12	24
HEICO-TEC HDS-3/4"-SW21	395300210000999	3/4"	21	35	44	50	12	24
HEICO-TEC HDS-3/4"-SW24	395300240000999	3/4"	24	38,5	44	50	14	24
HEICO-TEC HDS-1"-SW24	395301240000999	1"	24	38	54	59	14	27
HEICO-TEC HDS-1"-SW27	395300270000999	1"	27	44	54	59	16	27
HEICO-TEC HDS-1"-SW30	395300300000999	1"	30	50	54	61	17	29

* 更多尺寸请洽询。



HEICO-TEC® HDS 机用套筒

产品概览



机用套筒 - 加长

型号	编码	传动孔	对边宽度	尺寸				
				套筒端直径 D mm	传动端直径 d mm	总长度 L mm	套筒深度 t mm	总深度 T mm
HEICO-TEC HDS-3/8"-SW8-L	395300081000999	3/8"	8	13,5	19	57	5	45
HEICO-TEC HDS-1/2"-SW10-L	395300101000999	1/2"	10	17	25	82	7	64
HEICO-TEC HDS-1/2"-SW12-L	395300121000999	1/2"	12	19,7	25	82	8	64
HEICO-TEC HDS-1/2"-SW14-L	395300141000999	1/2"	14	22,5	25	82	10	64
HEICO-TEC HDS-1/2"-SW16-L	395300161000999	1/2"	16	24,5	30	82	10	64
HEICO-TEC HDS-3/4"-SW18-L	395300181000999	3/4"	18	32	44	100	11	74
HEICO-TEC HDS-3/4"-SW20-L	395300201000999	3/4"	20	34	44	100	12	74
HEICO-TEC HDS-3/4"-SW21-L	395300211000999	3/4"	21	36	44	100	12	74
HEICO-TEC HDS-3/4"-SW24-L	395300241000999	3/4"	24	39,5	44	100	14	74
HEICO-TEC HDS-1"-SW24-L	395301241000999	1"	24	39	54	100	14	68
HEICO-TEC HDS-1"-SW27-L	395300271000999	1"	27	45	54	100	16	68
HEICO-TEC HDS-1"-SW30-L	395300301000999	1"	30	51	54	100	17	68

* 更多尺寸请洽询。